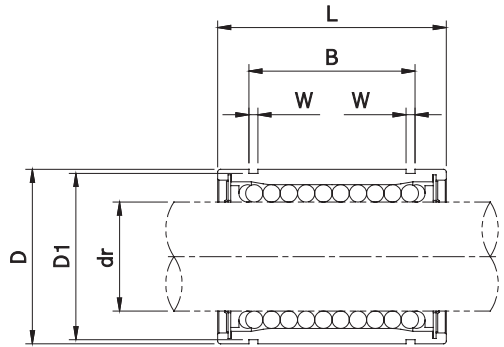


LM Series

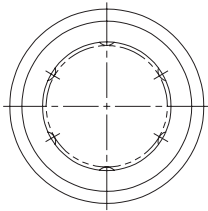


Unit : mm

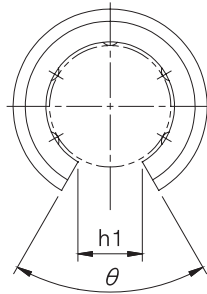
LM Series						Basic Load Ratings		Working Bore Diameter	
Standard type		Open type		Adjustable type		Dyn C (N)	Stat. Co (N)	dr (mm)	Tol. (μm)
Part No.	No. of Ball circuit	Part No.	No. of Ball circuit	Part No.	No. of Ball circuit				
LM4UU	4	-	-	-	-	88	108	4	$\begin{matrix} 0 \\ -8 \end{matrix}$
LM5UU	4	-	-	-	-	167	206	5	$\begin{matrix} 0 \\ -8 \end{matrix}$
LM6UU	4	-	-	LM 6UUAJ	4	200	260	6	$\begin{matrix} 0 \\ -9 \end{matrix}$
LM8SUU	4	-	-	LM 8SUUAJ	4	170	220	8	
LM8UU	4	-	-	LM 8UUAJ	4	260	400	8	
LM10UU	4	-	-	LM10UUAJ	4	370	540	10	
LM12UU	4	LM12UUOP	3	LM12UUAJ	4	410	590	12	
LM13UU	4	LM13UUOP	3	LM13UUAJ	4	500	770	13	
LM16UU	5	LM16UUOP	4	LM16UUAJ	5	770	1170	16	$\begin{matrix} 0 \\ -10 \end{matrix}$
LM20UU	5	LM20UUOP	4	LM20UUAJ	5	860	1370	20	
LM25UU	6	LM25UUOP	5	LM25UUAJ	6	980	1560	25	
LM30UU	6	LM30UUOP	5	LM30UUAJ	6	1560	2740	30	$\begin{matrix} 0 \\ -12 \end{matrix}$
LM35UU	6	LM35UUOP	5	LM35UUAJ	6	1660	3130	35	
LM40UU	6	LM40UUOP	5	LM40UUAJ	6	2150	4010	40	
LM50UU	6	LM50UUOP	5	LM50UUAJ	6	3820	7930	50	$\begin{matrix} 0 \\ -15 \end{matrix}$
LM60UU	6	LM60UUOP	5	LM60UUAJ	6	4700	9990	60	

Note) Plating and Raydent treatment are available

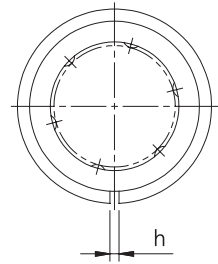
1N ≒ 0.102kgf



LM



LM□OP



LM□AJ

Unit : mm

Dimensions (mm)											Wgt.* (g)	Allowable Diametral Clearance (μ m)	Part No.		
D (mm)	Tol. (μ m)	L (mm)	Tol. (mm)	B (mm)	Tol. (mm)	W	D ₁	h	h ₁	θ (°)					
8	$^0_{-9}$	12	$^0_{-0.12}$	-	-	-	-	-	-	-	1.9	-3	LM4UU		
10	$^0_{-8}$	15	$^0_{-0.12}$	10.2	$^0_{-0.2}$	1.1	9.6	-	-	-	4	-3	LM5UU		
12	$^0_{-11}$	19	$^0_{-0.2}$	13.5		1.1	11.5	1	-	-	8	-5	LM6UU		
15		17		11.5		1.1	14.3	1	-	-	11	-5	LM8SUU		
15	24	17.5		1.1		14.3	1	-	-	16	-5	LM8UU			
19	$^0_{-13}$	29		$^0_{-0.3}$		22	1.3	18	1	-	-	30	-5	LM10UU	
21		30				23	1.3	20	1.5	8	80°	31.5	-5	LM12UU	
23	32	23				1.3	22	1.5	9	80°	43	-7	LM13UU		
28	$^0_{-16}$	37				$^0_{-0.3}$	26.5	1.6	27	1.5	11	80°	69	-7	LM16UU
32		42					30.5	1.6	30.5	1.5	11	60°	87	-9	LM20UU
40	59	41					$^0_{-0.3}$	41	1.85	38	2	12	50°	220	-9
45	64	44.5			1.85			43	2.5	15	50°	250	-9	LM30UU	
52	$^0_{-19}$	70	$^0_{-0.3}$		49.5			2.1	49	2.5	17	50°	390	-13	LM35UU
60		80			60.5			2.1	57	3	20	50°	585	-13	LM40UU
80	100	74			2.6			76.5	3	25	50°	1580	-13	LM50UU	
90	$^0_{-22}$	110		85	3.15			86.5	3	30	50°	2000	-16	LM60UU	

* Based on Standard type

1N \approx 0.102kgf